

Product Description

The K-LUMINA24 LED Panel typically used to replace 2'x4' fluorescent fixtures or new construction, It is designed to lay in drop ceilings in offices, schools and healthcare applications. The K-LUMINA24 LED panel is available for 4000K/5000K and offers 0-10VDC control dimming standard. The LEDs enable long life, high lumen maintenance, and high CRI, and are low maintenance and constructed without hazardous materials.

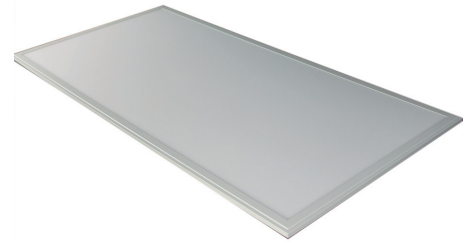
Applications

- Office Spaces
- Schools and Universities
- Hotels
- Lobby Areas
- Hospitals
- Meeting Rooms

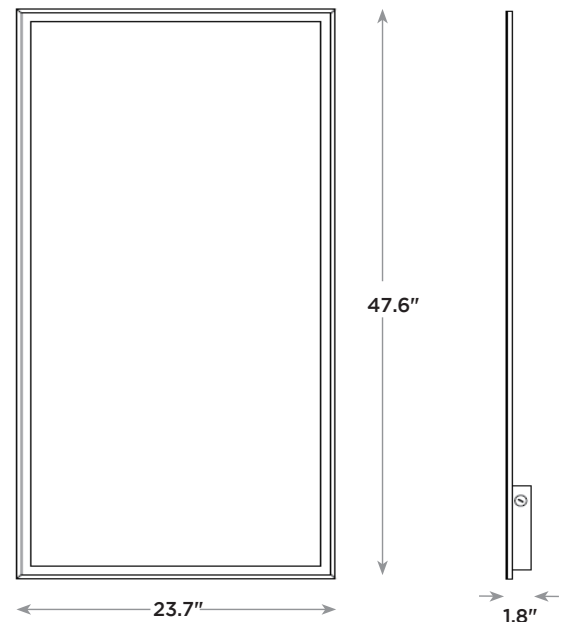
Features:

- Face frame is extruded aluminum painted white
- Ultra thin for narrow plenums
- Delivered Light Output: 5000 lumens
- Input Power : 50 watts
- CRI : 80
- CCT: 4000K,5000K
- Input Voltage : 100-277 VAC
- Warranty : 5 Years
- Lifetime : Designed to last more than 50,000 hours
- Dimming :10%-100% with 0-10V dimming controls
- Mounting : Recessed,Suspension
- Dimensions : L 23.7" x W 47.6" x H 1.8"
- Weight : max 13.23 lbs.
- Certification : ETLus , DLC , Fcc
- Environment : Damp location
- Also available in 2'x 2'
- Fits standard T-bar and narrow grid drop ceilings
- 7/8" conduit knock out provided

K-LUMINA 24 SERIES



Dimensions:



Luminaire Ordering Information:

Watts	Order Number	Model Number	Nominal Lumens	Lamp Life (Hrs.)	Dimensions (LxWxH)	CCT
50		KL24H-50W40K-D	5000	50,000	23.7"X23.7"X1.8	4000K
50		KL24H-50W50K-D	5000	50,000	23.7"X23.7"X1.8"	5000K

Product Specifications

ITEM	SPECIFICATION	DETAILS	
General Performance	Spacing Criteria	Available upon request	
	Wattage (W)	50W	50W
	Color Temperature (CCT)	4000K	5000K
	Nominal Lumens Delivered	5000lm	5000lm
	Efficacy (LM/W)	100lm/w	100lm/w
	CRI	>80	
	Color Consistency	Proprietary binning for uniform color	
	Lumen Maint. (L70)	50,000 hours	
Electrical	Power Factor	Over 95%	
	Input Voltage	100V-277V 50/60 Hz	
	Power Consumption	50watt nominal	
	THD	< 20%	
Control	Dimming Switch	Standard 0 -10V dimming 10%-100%	
	Linking Lengths/Qty	15 cable feet x 20 panels	
Physical	Dimensions	23.7" x 47.6" x 1.8"	
	Weight	13.23 lbs.	
	Housing	Aluminum	
	Lens	Translucent white PS	
	Mounting	Fits standard grid for drop ceilings	
	Operating Temperature	-5°F to 104°	
Certification	Humidity	20% - 85% RH, non condensing	
	Certification	ETLus, DLC, Fcc	
	Material Usage	RoHS compliant; no mercury	
	Environment	Damp location	
	Warranty	Five year	

REGULATORY & VOLUNTARY QUALIFICATIONS

- ETLus Listed.
- DLC qualified.
- Fcc tested

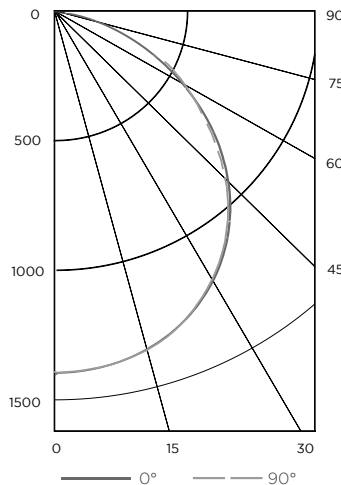
Application Reference

Open Space					
Spacing	Lumens	Wattag	LPW	w/ft ²	Average fc
8 x 8	4400Lm	40	100	0.63	62
	5500Lm	50	100	0.78	77
8 x 10	4400Lm	40	100	0.50	49
	5500Lm	50	100	0.63	62
10 x 10	4400Lm	40	100	0.40	39
	5500Lm	50	100	0.50	49
10 x 12	4400Lm	40	100	0.33	32
	5500Lm	50	100	0.42	41

9' ceiling; 80/50/20 reflectances, 2.5' workplane open room, CCT : 4000K LLF: 1.0 Initial. Open Space: 50' x 40' x 10'

Photometry

KL24H-50W40K-D



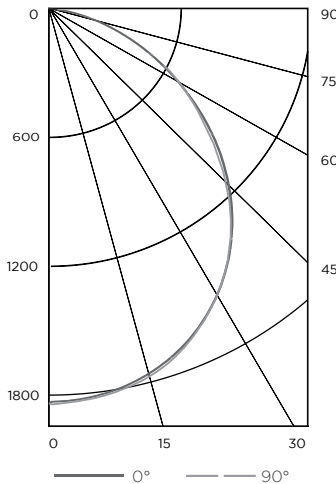
Intensity (Candlepower) Summary

Angle	0°	90°
0°	1424	1424
5°	1419	1415
15°	1360	1358
25°	1256	1254
35°	1130	1124
45°	935	926
55°	746	735
65°	508	501
75°	264	256
85°	56	60
90°	1	2

Zonal Lumen Summary

Zone	Lumens	% Lamp	% Fix
0-30	1108	27.0%	27.0%
0-40	1820	44.3%	44.3%
0-60	3231	78.7%	78.7%
0-90	4107	100%	100%

KL24H-50W50K-D



Intensity (Candlepower) Summary

Angle	0°	90°
0°	1887	1887
5°	1878	1884
15°	1827	1838
25°	1727	1728
35°	1462	1504
45°	1297	1313
55°	998	1025
65°	482	484
75°	330	354
85°	67	61
90°	3	2

Zonal Lumen Summary

Zone	Lumens	% Lamp	% Fix
0-30	1494	27.2%	27.2%
0-40	2462	44.9%	44.9%
0-60	4361	79.5%	79.5%
0-90	5482	100%	100%